

For NOERDEN SMART WATCH - LIFE2 / LIFE2+



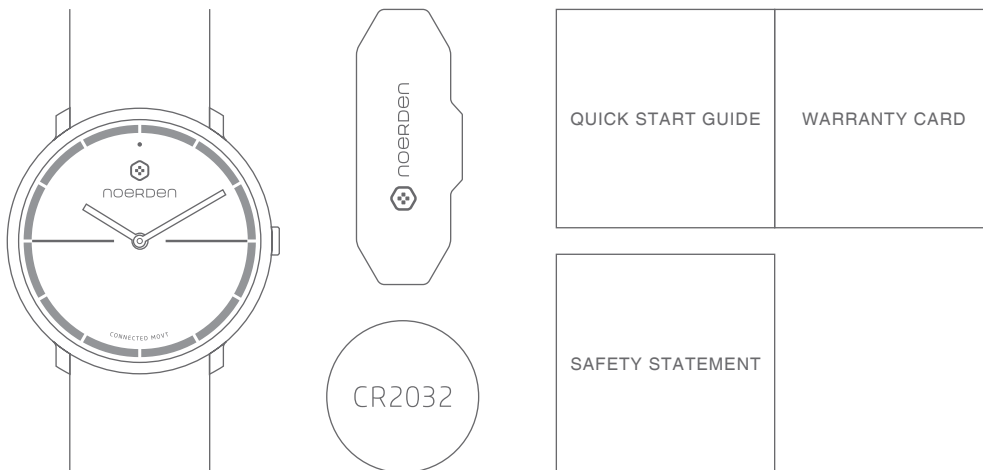
noerden  
**User Manual**

# TABLE OF CONTENTS

▪ Box contents .....	1
▪ Product Specifications .....	1
▪ Your watch .....	2
▪ Quick start with your smartphone .....	3
▪ Discover key functions .....	5
▪ How to change the battery .....	10
▪ How to change the strap .....	12
▪ Upgrade watch firmware .....	12
▪ Reset .....	13
▪ Declaration of conformity .....	13

## BOX CONTENTS

- NOERDEN Smart Watch
- Battery CR2032 (pre-installed)
- Professional Watch Case Opener
- Quick Start Guide
- Warranty Card
- Safety Statement



## PRODUCT SPECIFICATIONS

### NOERDEN Smart Watch LIFE2/LIFE2+

- 5ATM Waterproof
- Case Diameter: 38mm
- Operating Temperature: 0°C - 50°C
- Weight - LIFE2: 57.5g  
- LIFE2+: 69.5g
- Strap - LIFE2: adaptable up to 220mm wrist  
- LIFE2+: adaptable up to 240mm wrist
- Color - LIFE2: black, white, red, blue and navy  
- LIFE2+: full black and full grey

### Sensors & Technology

- Quartz Oscillator
- Activity G-sensor: day and night movement sensor
- Indicator Light

## Connectivity & Compatibility

- Connectivity: Bluetooth 4.1
- Compatible Devices: iPhone 5 and above, Android devices
- Operating Systems: iOS 10.0, Android 4.3 and above

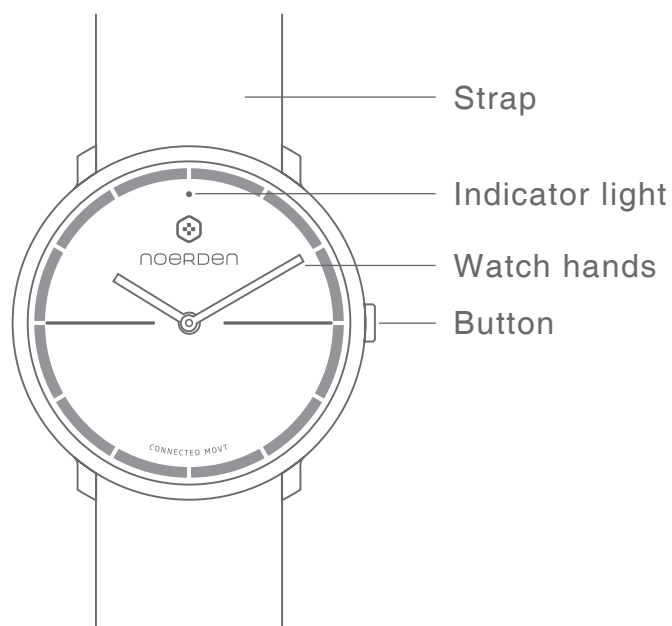
## Battery

- Battery Type: button battery CR2032
- Normal Capacity: 240mAh
- Input: 3V  $\approx$  20mA

## Smart Functions & Data

- World Time Synchronization
- Camera Remote
- Music Control
- Activity Tracking
- Sleep Monitoring
- Personal Goal Tracking
- Find My Phone
- Vibration Notifications
- Call Rejection
- Silent Alarm
- Do Not Disturb

## YOUR WATCH



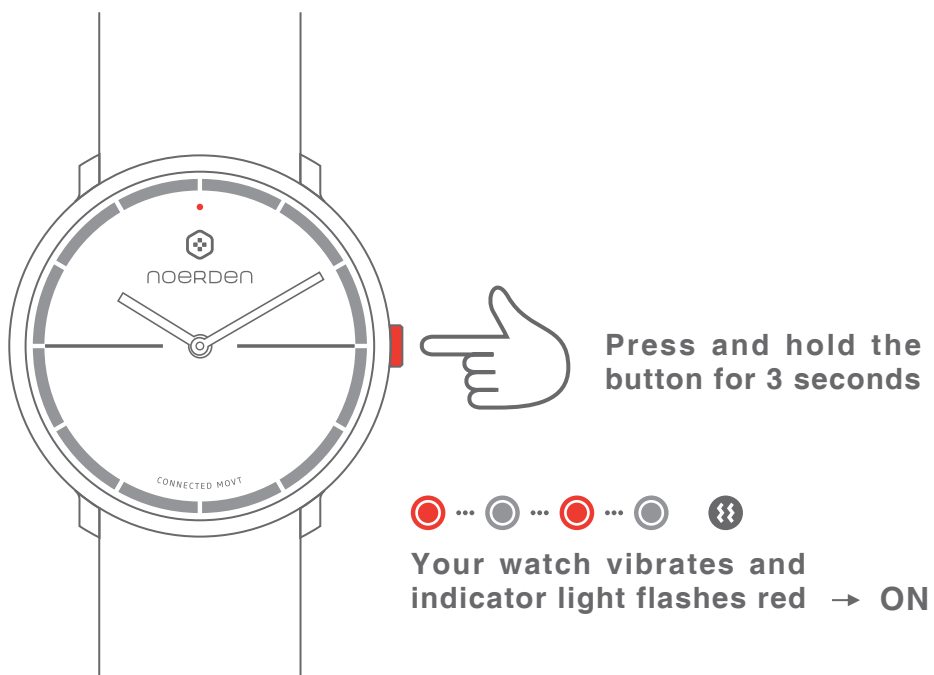
## QUICK START WITH YOUR SMARTPHONE



Scan the QR code to download NOERDEN APP  
or search for NOERDEN  
on the iOS or Android APP store.

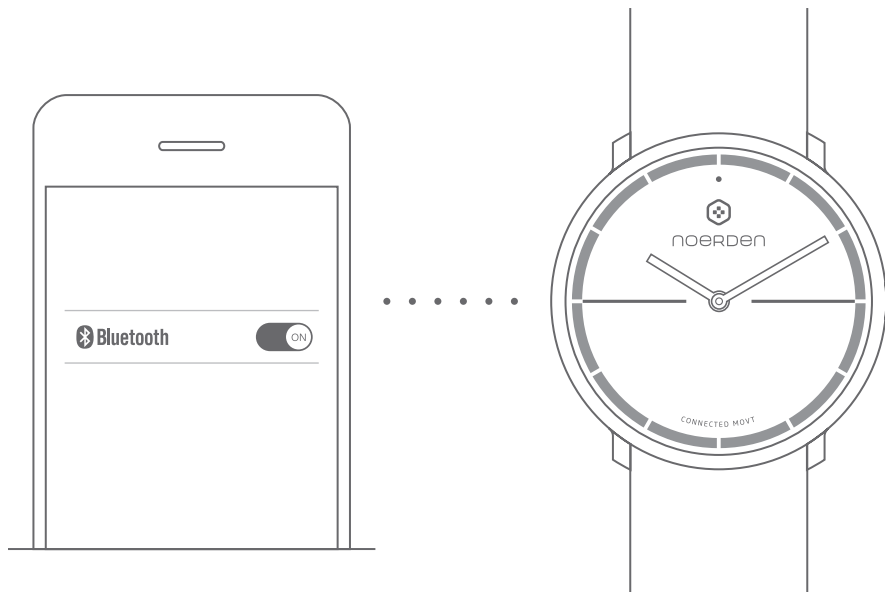
### ● TURN ON YOUR WATCH

Press and hold the button for 3 seconds. The indicator light will flash quickly and the watch will vibrate. After that, your watch is automatically switched on.

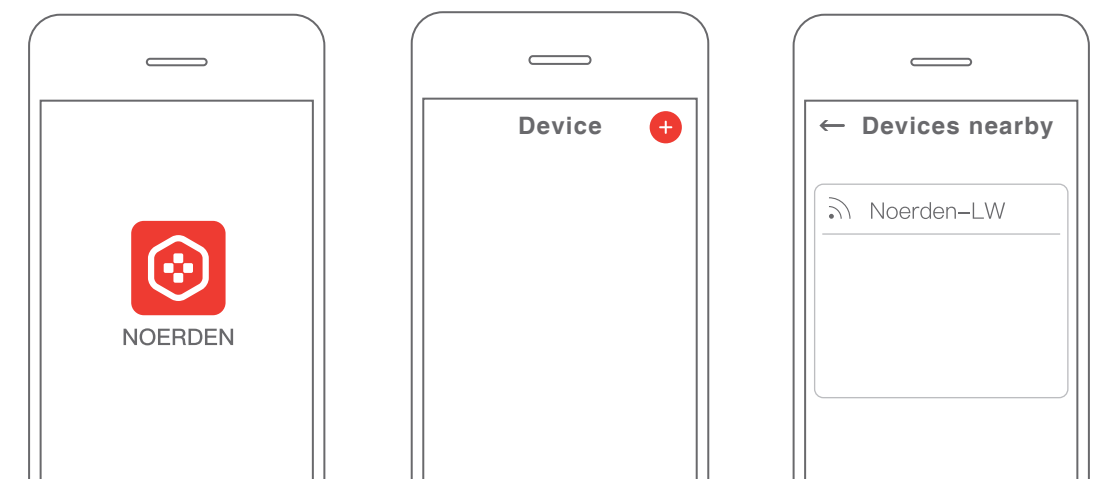


● **CONNECT TO THE NOERDEN APP**

1. Turn on your phone's Bluetooth and hold your watch close to the phone until the device is connected.



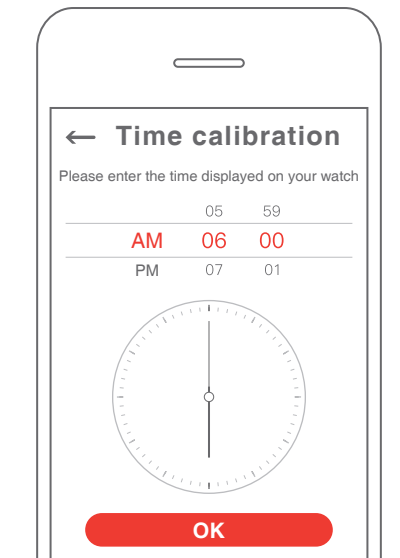
2. In NOERDEN APP, go to '**Device**' menu and click '**Add a new device**'. Follow the instructions: find your watch '**Noerden-LW**' and connect it.



## ● TIME CALIBRATION

When using your watch for the first time, you need to set the time of your new watch.

1. In the NOERDEN APP, go to the '**Device**' menu and then the '**Smart Time Calibration**'.
2. Enter the time displayed on your watch onto your phone's interface. The time will then automatically calibrate.



## DISCOVER KEY FUNCTIONS

### Bluetooth

Press the button to check the Bluetooth status of your watch.



The indicator light flashes red  
→ Bluetooth is disconnected



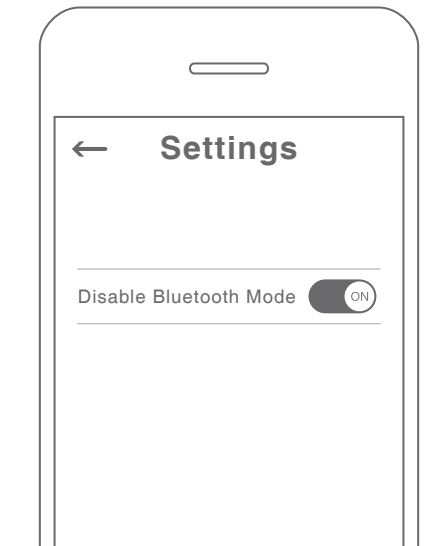
Indicator light is green  
→ Bluetooth is connected



## Disable Bluetooth Mode

The watch automatically starts Disable Bluetooth Mode when the bluetooth is disconnected for more than 2 hours, meaning Bluetooth is off.

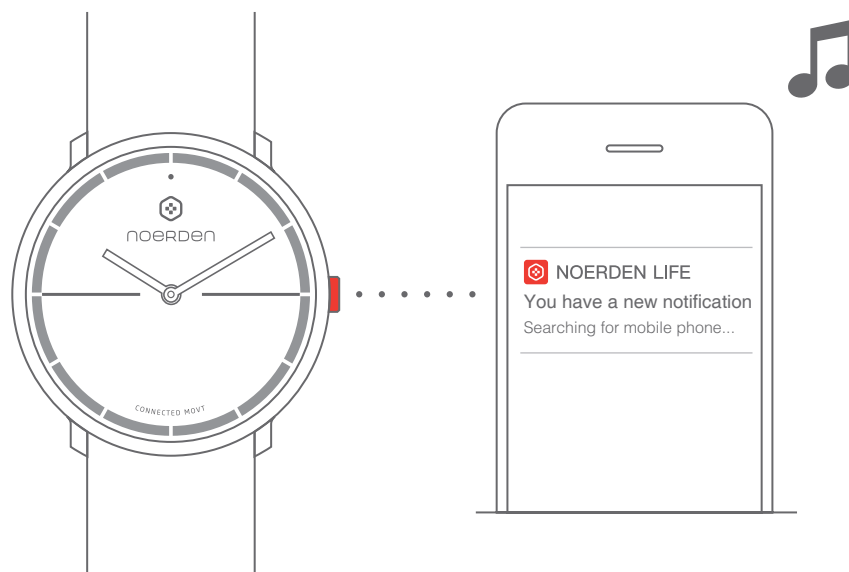
You can also manually enable the Disable Bluetooth Mode in the APP.



*Note: When you press the button once to check the Bluetooth status, Bluetooth will automatically switch on and your watch will reconnect to your phone if it was in Disable Bluetooth Mode.*

## Find My Phone

Double press the button and your phone will ring.



*Note: Your watch must be connected to your phone via Bluetooth. If your phone is on Silent Mode, it will only vibrate.*



## Call Alert and Rejection

### Call Alert



When you receive a call, the indicator light will flash in green and your watch will vibrate for 5 seconds.

### Call Rejection

To reject the call, press the button once. The indicator light will flash in red once and your watch will vibrate once.

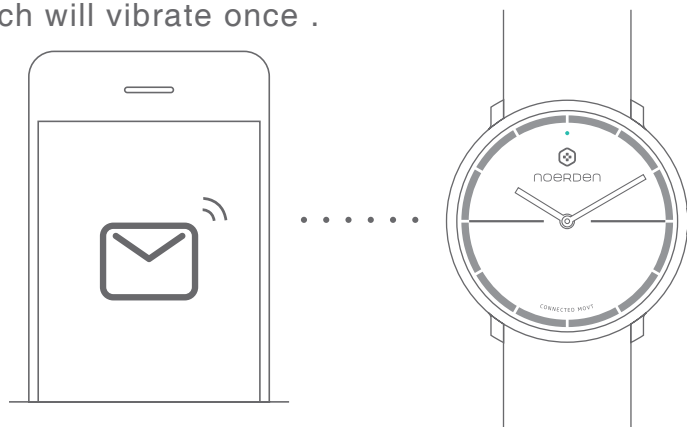


   **Your watch vibrates and indicator light flashes red once**

*Note: your watch must be connected to your phone via Bluetooth. This function must be switched ON in the 'Device' menu of the NOERDEN APP and you must accept the access.*

## Messages and Notifications

When you receive a message or notification, the indicator light will flash in green once and your watch will vibrate once .



   **Your watch vibrates and indicator light flashes green once**

*Note: your watch must be connected to your phone via Bluetooth. This function must be switched ON in the 'Device' menu of the NOERDEN APP and you must accept the access.*

## Silent Alarm

To wake-up gently, you can set a silent alarm time on the NOERDEN APP.

Your watch will vibrate for 8 seconds. To turn it off, press the button once. The indicator light will flash once in red and your watch will vibrate once.

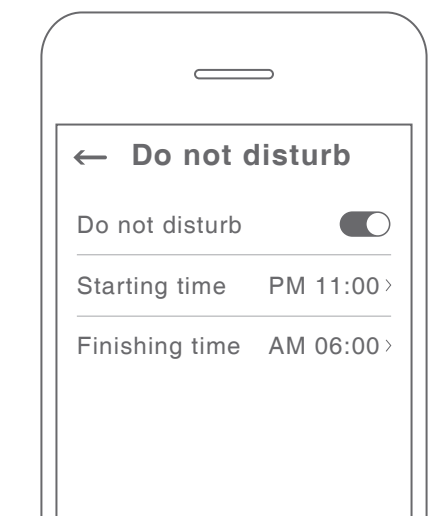


*Note: Your watch must be connected to your phone via Bluetooth. This function must be switched ON in the 'Device' menu of the NOERDEN APP.*

## Do Not Disturb

In '**Do Not Disturb**' Mode, all calls and notifications - except alarms, will be silenced.

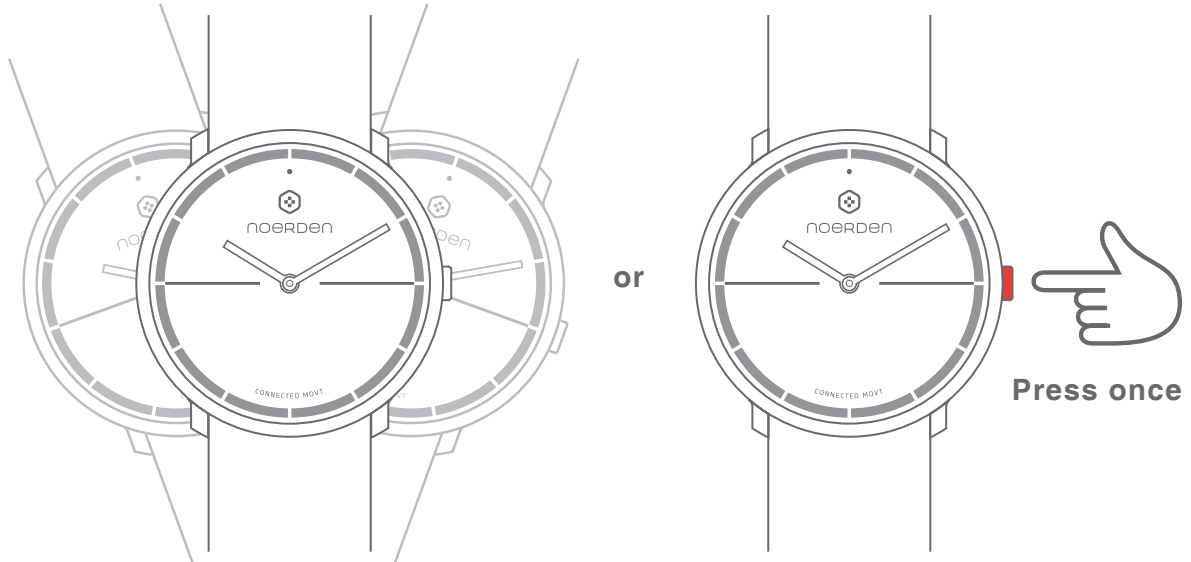
The default time is set from 11pm to 6am or you can change it in the '**Do Not Disturb**' Page in the NOERDEN APP.



*Note: Your watch must be connected to your phone via Bluetooth. This function must be switched ON in the 'Device' menu of the NOERDEN APP.*

## **Camera Remote**

In the NOERDEN APP, go to the "Device" menu and then "Camera Remote". A camera page will open. Shake your watch or press the button to take a picture.



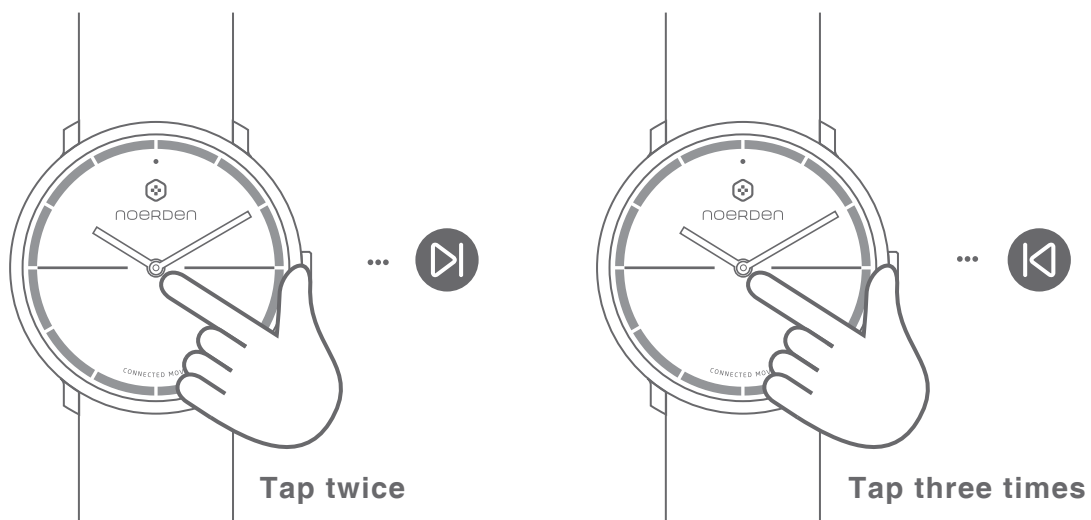
*Note: Your watch must be connected to your phone via Bluetooth, and you must accept NOERDEN APP to access your phone's camera.*

## **Music Control**

In the NOERDEN APP, go to the 'Device' menu to switch on the Music Control function. After that, you can tap your watch glass to control your music.

Tap the glass twice → Play the next song

Tap the glass three times → Play previous song

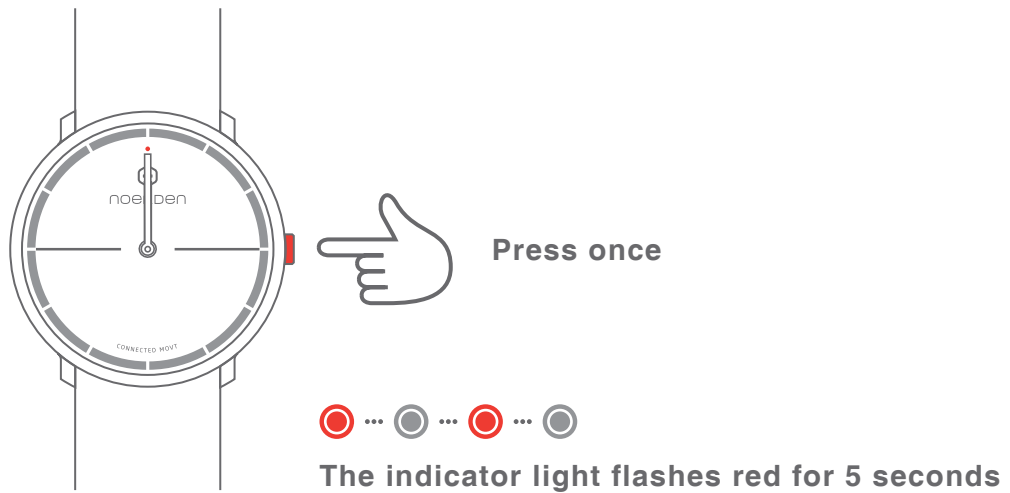


*Note: Your watch must be connected to your phone via Bluetooth and you must accept the NOERDEN APP to access your music apps.*

## Battery

You can check the battery level of your watch in the '**Device**' menu of the NOERDEN APP.

When your watch's battery is low, the watch hands will automatically set to 12 o'clock. When this occurs, if you press your watch button, the indicator light will flash in red for 5 seconds and all smart functions will turn off.

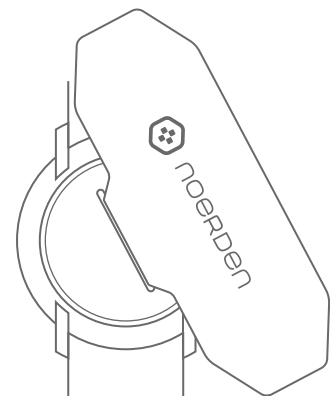


## HOW TO CHANGE THE BATTERY

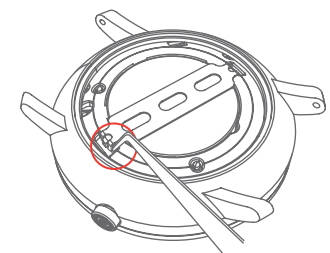
When the battery is low, your watch's Bluetooth is automatically turned OFF. To continue to enjoy all smart functions, you should change the battery as soon as possible.

We recommend you to go to a local watch shop to replace the battery CR2032. If you wish to do it yourself, you can follow the instructions below.

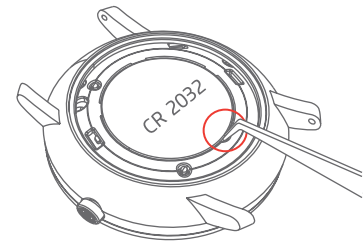
1. Open the watch case with the professional case opener.



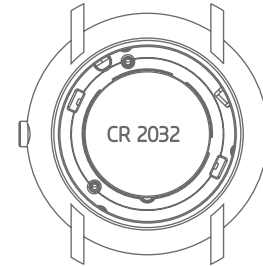
2. Take off the battery retainer.



3. Take out the old battery by using tweezers or a flat tool thinner than 2mm, carefully lift and remove the battery.

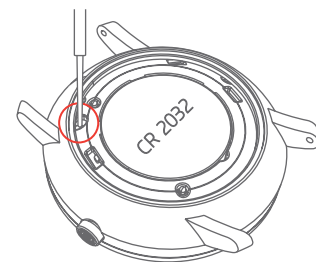


4. Install the new battery (CR2032) in the same way as removing it. Once it is properly installed, the indicator light will flash red once



**Indicator light flashes red once**

5. Use a sharp headed tool to gently press the reset button once, the indicator light will then flash green once.



**Indicator light flashes green once**

6. Use the same method to put the battery retainer back in.

7. Install the watch case and turn it until it's tight. You can then use your watch normally again!

*Note:*

- The warranty will be void if the battery was not changed by a professional and water damage occurs.
- If you get your battery changed by a professional, please keep the receipt as proof.
- When changing the battery yourself, make sure to close the case properly. If closed improperly, you risk impairing the watch's waterproof resistance.
- We suggest that you synchronize the data before changing your battery, in case of data loss.

**CAUTION**

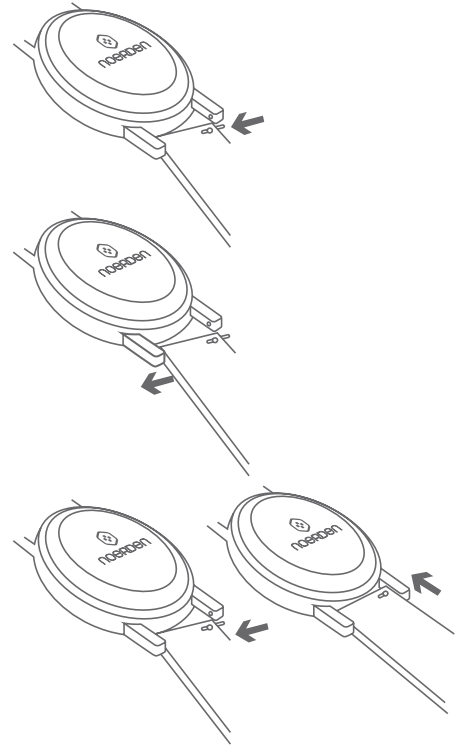
**RISK OF EXPLOSION IF BATTERY IS REPLACED BY AN INCORRECT TYPE.  
DISPOSE OF USED BATTERIES ACCORDING TO THE INSTRUCTIONS.**

## HOW TO CHANGE THE STRAP

1. Move the quick release spring bar to remove the strap.

2. Take your new strap and insert one side of the spring bar into the lug end.

3. Push the spring bar into the other side, your new strap is installed!



## UPGRADE WATCH FIRMWARE

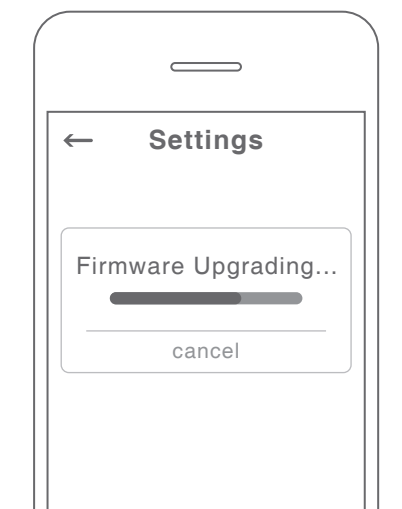
1. To update your firmware: go to the **NOERDEN APP** > **Profile** > **Settings** > **Check for firmware upgrade**.

2. Your phone will download the new firmware version and upload it to your watch.

3. During the installation, the indicator light of your watch will continuously flash in red.

4. When the indicator light stops flashing, the firmware has been upgraded successfully.

5. Check if the time of your watch is accurate, otherwise perform the time calibration.



.....



**Indicator light flashes red until  
firmware upgrade is successful**

## RESET

Press and hold the button for 6 seconds. The indicator light will flash in red once and the process will start.



 ...  **Indicator light flashes red once**

*Note: If you reset your watch to factory mode, it may delete all your data. You will have to restart your watch after the restoration.*

## DECLARATION OF CONFORMITY

The undersigned, Noerden (Shanghai) Information Technology Co., Ltd declares that the electrical radio equipment types of the Noerden Smart Watch, Models LIFE2/LIFE2+, comply with the 2014/53/EU directive.

The complete text is available at [www.noerden.eu/support](http://www.noerden.eu/support)



[www.noerden.eu](http://www.noerden.eu)

For more information,  
go to the **FAQ** page  
on our website.